



R.W. Sidley, Inc. employees with 25+ years of service.

## R.W. Sidley, Inc. Newsletter

### 2017 Awards Banquet

On Saturday, August 5, 2017, R.W. Sidley, Inc. hosted an outdoor event at our corporate office in Painesville to honor employees who had 25+ years of service to the company. In all, there were 73 employees and recent retirees who were in this recognized group. The longest serving employees had 44 years of service! Combined the 73 employees have over 2,425 years of service to R.W. Sidley, Inc. Thank you all!

#### In This Issue

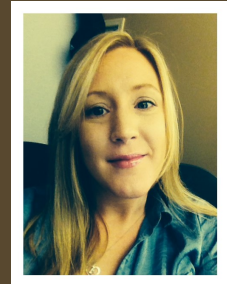
[2017 Awards Banquet](#)

[2017 Solheim Cup](#)

[Employment Opportunities](#)

[Featured Employee](#)

#### FEATURED EMPLOYEE



**Michelle Gamiere**

Michelle Gamiere is a Project Manager for Sidley Precast Group. Before joining the Sidley team she spent 5 years in contract management where she was responsible for support of seven (7) sales divisions for new and existing customers and customized and controlled companies master contract database for the companies support center, field engineers and the sales team. Michelle also served as the liaison



## 2017 Solheim Cup Des Moines Golf & Country Club

August 14-20, 2017, Pro/Angle customer Des Moines Golf & Country Club in Des Moines, Iowa hosted the Solheim Cup, an international Women's tournament featuring professional golfers from the US and Europe.



Team USA defeated Team Europe to retain the Solheim Cup. The tournament next heads to Gleneagles, Scotland in 2019.



It was our honor to provide Pro/Angle bunker sand to Des Moines Golf & Country Club, a project which was completed over a four year period renovating nine holes per year.

The hard work and dedication of the R.W. Sidley's production team, our freight partners, contractors, the agronomy department at the club along with turfgrass volunteers culminated in creating a world class golf and viewing experience on an international stage.

Tournaments of this scale often require volunteers to lend a hand, Pro/Angle Sales Manager, Eric Ludewig was honored to be on the volunteer crew comprised of 80 industry professionals in addition to the club's regular maintenance staff.

Congratulations Team USA, and to Golf Course Superintendent and Master Greenkeeper, Rick Tegtmeier along with his staff at Des Moines Golf and

between customers, management, sales team and OEM partners.

Michelle also had an internship with AAA Land Surveying for her Civil Engineering courses, where she implemented drawing revisions provided by engineers and consulted with the engineering department in completing grading and post construction plans.

Since joining Sidley Precast Michelle has been involved in all aspects of the projects from bidding to project completion.

Michelle and her husband are proud parents of a 20 month old girl. She enjoys the outdoors and traveling with friends.

Please join me in welcoming Michelle to the Sidley Precast Team!

[Join Our Mailing List!](#)



Eric Ludewig, Sports Aggregates Sales Manager  
7123 Madison Road  
Thompson, OH 44086  
440.298.3232 Ext. 3177  
440.343.1047 Cell  
eludewig@rwsidley.com  
[www.pro-angle.com](http://www.pro-angle.com)  
@proangleohio



Click on the image above to watch a broadcast from the Solheim Cup.

## Employment Opportunities

R.W. Sidley, Inc. is currently hiring for multiple positions, at many of our locations across Northeast Ohio and Western Pennsylvania. We offer competitive wages and benefit packages, including healthcare and retirement benefits. [Click here for more details.](#)



[www.rwsidley.com](http://www.rwsidley.com) | 800.536.9343

## Sidley Builders Center Locations

**Alliance** 2000 Beeson Street, Alliance, OH 44601 (330) 823-1130  
**Ashtabula** 508 Front Street, Ashtabula, OH 44004 (440) 964-7000  
**Grand River** 1 Coast Guard Road, Grand River, OH 44045 (440) 352-1642  
**Newbury** 10688 Kinsman Road, Newbury, OH 44065 (440) 564-2221  
**North Canton** 7545 Pittsburg Avenue NW, North Canton, OH 44720 (330) 499-5616  
**North Kingsville** 3026 East Center Street, North Kingsville, OH 44068 (440) 224-2664  
**Painesville** 436 Casement Avenue, Painesville, OH 44077 (440) 352-3100  
**Slippery Rock** 715 New Castle Road, Slippery Rock, PA 16057 (724) 794-4451  
**Thompson** 7123 Madison Road, Thompson, OH 44086 (440) 298-3852  
**West Middlesex** 3401 New Castle Road, West Middlesex, PA 16159 (724) 528-9903  
**Youngstown** 3424 Oregon Avenue, Youngstown, OH 44509 (330) 793-7374