



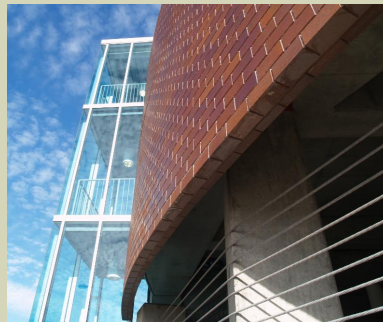
Cuyahoga Community College Parking Garage, Cleveland, OH

R.W. Sidley, Inc. Newsletter

Cuyahoga Community College Parking Garage Cleveland, OH

The Cuyahoga Community College Parking Garage in Cleveland, OH is located across the street from Progressive Field, home of the Cleveland Indians.

The precast concrete parking garage features curved precast panels with inlaid thin brick.



The parking garage was built for student use. However, in the case of special events, such as an Indians game, the garage is open to the public and the proceeds go towards student scholarships.

For more information on the benefits of precast please contact:



Larry McCune, Sales & Quality Control Manger
Sidley Precast Group
9800 Madison Road
Thompson, OH 44089
440.298.3232 Ext. 3116
440.823.2304 Cell
Lmccune@sidleyprecast.com
www.sidleyprecast.com



In This Issue

[Cuyahoga Community College Parking Garage](#)

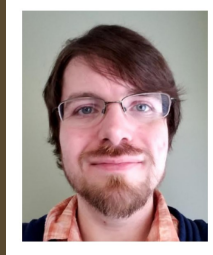
[Pro Topdressing](#)

[Mack Granite](#)

[Employment Opportunities](#)

[Featured Employee](#)

FEATURED EMPLOYEE



Rob Keiper

Rob Keiper is an IT Technician here at Sidley. He is the one you see if you have a computer, phone or printer issue. With all our locations through out Northeast Ohio and Western Pennsylvania, that means a lot of traveling.

Rob previously worked for TT Electronics in Perry, OH, where he was a Technical Support Specialist, and handled day-to-day IT issues.

Born in Michigan, Rob grew up here



With over 75 years in business, R.W. Sidley, Inc. operates a state of the art processing plant that produces the highest quality quartz sands of the highest purity free from deleterious materials.

Our Pro Topdressings meets USGA® specifications, and is available in both wet or dry, from fine to coarse with consistent quality every time.



Pro 3010 Topdressing Fine

Meets USGA® recommendations, 76% of sand particles medium and coarse, 24% fine grade.



Pro 2010 Topdressing Medium

Meets USGA® recommendations, 80% of sand particles medium and coarse, 20% fine grade.



Pro 3050 Topdressing Coarse

Meets USGA® recommendations, 97% of sand particles medium and coarse, 3% fine grade.

For more information, samples, pricing and delivery options please contact:



Eric Ludewig, Silica Product Sales Manager

7123 Madison Road

Thompson, OH 44086

440.298.3232 Ext. 3177

440.343.1047 Cell

eludewig@rwsidley.com

www.pro-angle.com

[@proangleohio](https://twitter.com/proangleohio)

in Northeast Ohio, living in Mentor, OH. He attended Mentor High School and graduated in 2001, before attending Lakeland Community College where he received degrees in Microsoft Networking and Nuclear Engineering Technologies.

Rob's family still lives in the area including his Mother, brother and 2 nephews, and has another brother in California with two nieces.

[Join Our Mailing List!](#)



Mack Granite

The Mack Granite model is once again the best selling Class 8 straight truck in the country. The rugged Mack Granite model is the No. 1 selling heavy-duty conventional straight truck in the U.S. based on IHS Markit U.S. new commercial vehicle registrations.



Built in the U.S.A. with Mack's legendary durability and reliability, as well as the latest pioneering features to improve productivity and performance, the Granite model is the job-site standard. The Mack Granite is also a very good looking chassis and is quite an eye catcher especially when you dress it up with polished aluminum wheels and an aluminum drop body.



Bill Golden, Mack Truck Sales
7123 Madison Road
Thompson, OH 44086
440.298.3228 Ext. 3052
440.343.0435 Cell
bgolden@rwsidley.com
www.sidleytrucks.com

Employment Opportunities

R.W. Sidley, Inc. is currently hiring for multiple positions, at many of our locations across Northeast Ohio and Western Pennsylvania. We offer competitive wages and benefit packages, including healthcare and retirement benefits. [Click here for more details.](#)



www.rwsidley.com | 800.536.9343

Sidley Builders Center Locations

Alliance 2000 Beeson Street, Alliance, OH 44601 (330) 823-1130

Ashtabula 508 Front Street, Ashtabula, OH 44004 (440) 964-7000

Grand River 1 Coast Guard Road, Grand River, OH 44045 (440) 352-1642

Newbury 10688 Kinsman Road, Newbury, OH 44065 (440) 564-2221

North Canton 7545 Pittsburg Avenue NW, North Canton, OH 44720 (330) 499-5616

North Kingsville 3026 East Center Street, North Kingsville, OH 44068 (440) 224-2664

Painesville 436 Casement Avenue, Painesville, OH 44077 (440) 352-3100

Slippery Rock 715 New Castle Road, Slippery Rock, PA 16057 (724) 794-4451

Thompson 7123 Madison Road, Thompson, OH 44086 (440) 298-3852

West Middlesex 3401 New Castle Road, West Middlesex, PA 16159 (724) 528-9903

Youngstown 3424 Oregon Avenue, Youngstown, OH 44509 (330) 793-7374