

January 2017



Stock pile of Pro/Angle bunker sand at Bigwin Island Golf Club, Lake of Bays, ON.

R.W. Sidley, Inc. Newsletter

2017 has arrived and it brings new challenges and opportunities to us all. One challenge that we help our customers with daily is logistics. We have the experience and partners to make the delivery of our products to you as simple as possible, whether they are delivered on our fleet of trucks and specialized trailers, rail or by barge. This newsletter features articles on several logistic solutions.

Bigwin Island Golf Club Lake of Bays, ON

Pro/Angle Bunker Sand is proud to be part of a major bunker renovation project at Bigwin Island Golf Club in Lake of Bays, Ontario, Canada. Click on the link below to watch the video and learn about the renovation project and logistics involved in getting Pro/Angle all the way from Ohio on to the island.

[Bigwin Island Golf Club, Bunker Renovation Video](#)



Eric Ludewig, Silica Product Sales Manager
7123 Madison Road
Thompson, OH 44086
440.298.3232 Ext. 3177
440.343.1047 Cell
eludewig@rwsidley.com
www.pro-angle.com



In This Issue

[Bigwin Island Golf Club](#)

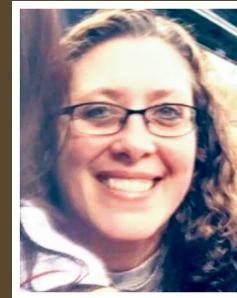
[Shipment to Israel](#)

[The Grand River
Railway](#)

[Employment
Opportunities](#)

[Featured Employee](#)

FEATURED EMPLOYEE



Stacey Tessmer

Stacey Tessmer joined our Construction Supply division this fall as an Inside Sales Coordinator / System Administrator. Before coming aboard at Sidley she work for Pilot Flying J as a Shift Leader then promoted to Merchandiser. Prior to Pilot J she worked for Speedway for 10 years, working her way up from Cashier to Store Manager.

Stacey will be working with our



@proangleohio

Filter Media bound for Israel

Recently R.W. Sidley sent out a shipment of filter media destined for Haifa, Israel. The order was packaged in 50 lb. bags, palletized, shrink wrapped and loaded into two (2) shipping containers that will be transported overseas.

While most of our filter media orders are delivered within 500 miles of our plant it is not usual to get bid requests and orders from further distances. Where ever your location, we work to find the best transportation solution for our customers.



Rob Sidley, VP Aggregate Sales
7123 Madison Road
Thompson, OH 44086
440.298.3232 Ext. 3135
440.343.2371 Cell
robsidley@rwsidley.com
www.rwsidley.com



Pro/Angle bunker sand loaded on to a closed hopper rail car.

The Grand River Railway

R.W. Sidley has utilized the rail road for delivery of our Pro/Angle bunker sand on many projects that are over 500 miles away. The coordination of all the parts in such a delivery take time and expertise. We have worked with The Grand River Railway in Painesville, OH, to

ready-mix customers and plants on current projects and upcoming bids. Internally she is responsible for ticket control, to ensure sales tickets are correct before they are invoiced, as well as many other administrative responsibilities.

She accept the job offer because she had heard it was a great company to work for and employees are treated well. Her experience has been that people have been friendly and very helpful. According to Stacey, she loves her job because it challenges her everyday, and she is learning something new which keeps life interesting.

Stacey is a single Mom, her daughter, Megan, is currently attending Kent State University pursuing her degree in radiology. She is close with her family that live in area along with her two (2) cats Tina and Misty.

Stacey enjoys golf, reading and cheering on our Cleveland teams!

Please join us in welcoming Stacey to the Sidley team!

[Join Our Mailing List!](#)

load and transfer the rail cars to the main rail line for delivery with CSX. Click the link below to read the entire article about The Grand River Railway.

[Restored Grand River Railway](#)

UPCOMING EVENTS:

Golf Industry Show, Trade Show

Orange County Convention Center

Orlando, FL

Visit us at **Booth 572**

February 8-9, 2017, 9 am-5 pm

PCI Convention & National Bridge Conference

Designing and Building with Precast Concrete Seminar

Earn 3 Hours of Continuing Education-FREE

Discover why designers, developers and construction managers are turning to precast concrete for their new resilient communities and structures.

Huntington Convention Center

Cleveland, OH

March 3, 2017, Lunch 12:00 pm-1:00 pm, Seminar 1:00 pm - 4:00 pm

The seminar is FREE but you must register by February 24, 2017.

www.pci.org/PrecastSeminar2017

New England Regional Turfgrass Conference and Show

Rhode Island Convention Center

Providence, RI

Visit us at **Booth 703**

March 6-9, 2017

Employment Opportunities

R.W. Sidley, Inc. is currently hiring for multiple positions, at many of our locations across Northeast Ohio and Western Pennsylvania. We offer competitive wages and benefit packages, including healthcare and retirement benefits. [Click here for more details.](#)



www.rwsidley.com | 800.536.9343

Sidley Builders Center Locations

Alliance 2000 Beeson Street, Alliance, OH 44601 (330) 823-1130

Ashtabula 508 Front Street, Ashtabula, OH 44004 (440) 964-7000

Grand River 1 Coast Guard Road, Grand River, OH 44045 (440) 352-1642

Newbury 10688 Kinsman Road, Newbury, OH 44065 (440) 564-2221

North Canton 7545 Pittsburg Avenue NW, North Canton, OH 44720 (330) 499-5616

North Kingsville 3026 East Center Street, North Kingsville, OH 44068 (440) 224-2664

Painesville 436 Casement Avenue, Painesville, OH 44077 (440) 352-3100
Slippery Rock 715 New Castle Road, Slippery Rock, PA 16057 (724) 794-4451
Thompson 7123 Madison Road, Thompson, OH 44086 (440) 298-3852
West Middlesex 3401 New Castle Road, West Middlesex, PA 16159 (724) 528-9903
Youngstown 3424 Oregon Avenue, Youngstown, OH 44509 (330) 793-7374

R.W. Sidley, Inc., 6900 Madison Avenue, Thompson, OH 44086

[SafeUnsubscribe™ {recipient's email}](#)

[Forward this email](#) | [Update Profile](#) | [About our service provider](#)

Sent by newsletter@rwsidley.com in collaboration with



Try it free today